

# Team Manager Booklet



**ARCHERY WORLD CUP**

Antalya 2025



The team managers meeting will take place at:

Nashira City Hotel – Conference Room

03 June 2025 – 18:00

All team managers are requested to attend this meeting (maximum 2 representatives per country). Teams without a team manager are advised to send one of their athletes to the meeting.

Please read this document upon receipt and bring it with you to the team managers meeting.

*Version 1.0 – 27 May 2025*



# Welcome word from the LOC.

As Chairman of the Organising Committee, it is my pleasure to welcome all participating athletes, officials and all distinguished guests to the third stage of the 2025 Hyundai Archery World Cup, in Antalya.

I am sure that all participants – athletes, officials, media representatives and spectators – will enjoy this exciting competition and all athletes will demonstrate their great skill, competitiveness, and fairness at this event.

On behalf of the Organising Committee, I would like to thank, very much, World Archery and all its member associations for their support.

I am confident that all participants will enjoy unforgettable impressions of the beautiful city of Antalya, Türkiye.

I wish you all a very pleasant stay in Antalya and the best of luck, to all athletes in achieving excellent results.

Sincerely yours,

Mr. Abdullah TOPALOGLU  
Chairman of LOC

## Contents

Welcome word from the LOC.....	- 2 -
Introduction.....	- 4 -
1.1 Opening .....	- 4 -
1.2 Important dates for the outdoor season.....	- 4 -
Contacts.....	- 5 -
Technical aspects of the competition .....	- 6 -
3.1 Number of participants per category .....	- 6 -
3.2 Competition programme .....	- 6 -
3.3 Practice .....	- 6 -
3.4 Equipment inspection.....	- 7 -
3.5 Rounds .....	- 8 -
3.6 Appeal procedure .....	- 8 -
3.7 Lines .....	- 8 -
Results .....	- 9 -
4.1 Timing control system .....	- 9 -
4.2 Results system.....	- 9 -
4.3 Rankings .....	- 9 -
Reminder on Rules .....	- 10 -
5.1 Dress regulations.....	- 10 -
5.2 Rules update.....	- 10 -
5.3 Antalya Specific Applicable rules .....	- 11 -
5.4 Accreditation cards rules .....	- 14 -
Accreditation process .....	- 15 -
Logistics.....	- 16 -
6.1 Transportation .....	- 16 -
6.2 Meals during the event.....	- 16 -
6.3 Internet Access and additional hotel charges .....	- 16 -
6.4 Medical related issues .....	- 16 -
6.5 Data collection .....	- 16 -
Protocol, ceremonies, clean sport.....	- 18 -
7.1 Medal ceremonies .....	- 18 -
7.2 Mixed zone and press conferences:.....	- 18 -
7.3 Clean sport.....	- 18 -
Archery venues .....	- 20 -
Event venues .....	- 20 -
Qualifications and eliminations .....	- 20 -
Finals venue.....	- 20 -
Team nomination form.....	- 22 -
Mixed team nomination form .....	- 23 -
Appeal Form .....	- 24 -

# Introduction

## 1.1 Opening

- Brought to order by the World Archery head of events and marketing (HE), Mr. T. Aubert
- Introduction of the panel, by World Archery HE, Mr T. Aubert
- Roll call of all attending nations (HE)
- Welcome speech, by Organising Committee
- Jury of Appeal, by World Archery HE

## 1.2 Important dates for the outdoor season

Date	Event	Entry Deadline Type
06 June 2025	Hyundai World Archery Championships - Gwangju	Preliminary
17 June 2025	Hyundai Archery World Cup stage 4 – Madrid	Final
24 June 2025	World Archery Para Championships - Gwangju	Preliminary
27 July 2025	World Archery Youth Championships - Winnipeg	Final
15 August 2025	Hyundai World Archery Championships - Gwangju	Final
01 September 2025	World Archery Para Championships - Gwangju	Final

# Contacts

## Organisation Management

Mr. Hakan CAKIROGLU

+90 532 422 51 00

## Finances

Mr. Serdar KESEN

+90 531 992 13 53

## Hotel and Accommodation

Mr. Caner SECILMIS

+90 537 224 52 24

## Transport Manager

Mr. Fatih Meric YILDIRIM

+90 506 356 45 07

## Medical Care

Mr. Mehmet Ejder SOZEN

+90 505 535 15 52

## Technical requirements and field manager

Mr. Kerem KIRSEVER

+90 541 297 68 15

## Press Officer

Mr. Siner AYDIN

+90 533 515 25 33

## World Archery Federation

Thomas AUBERT – head of events and marketing

Chris WELLS – head of communications

+41 79 664 99 27

## Tournament Judge Commission

Robert ERICA - chairperson

Logan ANDREW – deputy chairperson

Alex VECCHIO – Director of Shooting

Shahzad ALLAHYARI

Fatima ABULLARADE

Klemen CEZAR

Aiya AITBAY

## Assistants Director of Shooting

Tahsin Cinar GOZACAN

## Team Managers

WhatsApp group



## Jury of Appeal

To be announced during the meeting

## Coach Committee representative.

Goktug ERGIN (TUR) – chairperson of the committee

Hana MAJAROVA (CZE) – Member

Marcel van APELDOORN (NED) – Member

Natalia VALEEVA (ITA) - Member

# Technical aspects of the competition

## 3.1 Number of participants per category

Updated 23 May 2025

Member Associations: 45

	Individual	Teams	Mixed Teams
Recurve Men	100 1/32	24 1/12	28 1/12
Recurve Women	90 1/32	21 1/12	
Compound Men	68 1/32	17 1/12	20 1/12
Compound Women	53 1/32	12 1/8	

## 3.2 Competition programme

The current version of the schedule, when writing the team managers booklet is v1.0 (27 May 2025, 10:00 UTC).

Please frequently refer to World Archery website for latest updates of the schedule, as changes may occur during the week.



## 3.3 Practice

There will be one practice session before each qualification round. The target assignment will be published after team manager meeting, athletes will use the same target position for practice and qualifications.

A training range will be made available by the organisers, and will run according to the following schedule:

Date / Time	09:00 – 12:00	14:30 ~17:30
02 June 2025, Monday (Main Field)	38 Targets at 70m + 26 Targets at 50m	38 Targets at 70m + 26 Targets at 50m
03 June 2025, Tuesday (Main Field)	38 Targets at 70m + 26 Targets at 50m	38 Targets at 70m + 26 Targets at 50m
Date / Time	08:30 ~ 11:30	14:30 ~17:30
04 June 2025, Wednesday	40 Targets at 70m	40 Targets at 50m
05 June 2025, Thursday	10 Targets at 50m + 30 Targets at 70m	10 Targets at 70m + 30 Targets at 50m
06 June 2025, Friday	20 Targets at 50m + 20 Targets at 70m	20 Targets at 50m + 20 Targets at 70m
07 June 2025, Saturday	30 Targets at 50m + 10 Targets at 70m	20 Targets at 50m + 20 Targets at 70m

The qualification venue will be open on Monday and Tuesday for unofficial practice. The field will be running at the same time as the practice range.

## Qualification round practice

- One-hour practice on the Field of Play, 15-minutes break, followed by qualification once the field is reset.
- Non-competing athletes can use the practice field.
- Transportation is available for athletes between the qualification field, training range and official event hotels. Schedule will be displayed in the official event hotel lobbies.

## 3.4 Equipment inspection

The equipment inspection will be done on a volunteering basis during practice on Tuesday 3 June, and during the one-hour practice prior to the qualification on 4 June, meaning that any athlete can proceed to the equipment inspection area to get their equipment checked.

The equipment inspection will not be limited to these period only, judges may, at any time during the competition, require inspecting an athlete's bow.

World Archery will use electronic bow scales for equipment inspection.

*Preamble to Chapter 11:*

*This article lays down the type of equipment athletes are permitted to use when shooting in World Archery competitions. It is the athlete's responsibility to use equipment which complies with the rules. Any athlete found to be using equipment contravening World Archery Rules may have his scores disqualified. Described below are the specific regulations that apply to each division followed by the regulations that apply to all divisions.*

**15.1.5** - Any athlete found to be using equipment contravening World Archery Rules may have his scores partly or fully cancelled (see 11. Chapter 11-Athletes Equipment).

- All teams are to wear their team uniform with their name and have their valid accreditation during official practice.
- Spare equipment must also be brought for inspection.
- Team managers are to check the details of their athletes such as, name, date of birth is correct beforehand.
- Inform the Judge if details are not correct and the Judge will inform World Archery Results Team. Instructions to use the tablet scoring system will be carried out if requested.

## Athlete (back) Numbers

Athlete numbers will be issued on the day of the qualification round (with the score cards) during practice.

Athlete numbers must be worn on the quiver or thigh, facing the waiting line while shooting, throughout the event including finals.

## The Environment

Team managers, please instruct your team members to always use the litter bins located on the competition, practice ranges and common areas.

## Water

To aid the environment, water will be distributed using bottles located on designated areas.

A new bottle of water will only be issued by the return of the empty bottle. If the empty bottle has been lost, please contact the Organising Committee in the LOC Office.

Please make sure to give empty bottles back to the water station. Do not throw them in the trash bin. There is a refund and recycling system for all bottles and bins.

Please use the trash bins provided and clear the area you have used on the FOP before leaving.

## Non-Smoking



This is a non-smoking event.

Smoking is forbidden inside public buildings and all competition and training areas. This also includes electronic cigarettes, refer to book 3, Art.12.8.

### 3.5 Rounds

After qualification rounds, bonus points will be allocated to top 8 athletes in each category. The points will be allocated on the total score for the 60-arrow qualification, before applying any tie breaking rule.

Target faces will **NOT** be changed after practice arrows. During a session, they will be changed only if the judges require it. Please instruct your athletes to mark all arrow holes during practice and competition.

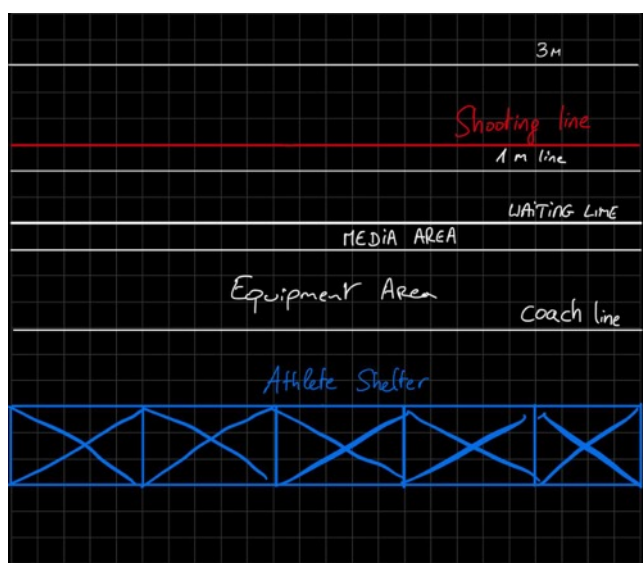
The sessions will start on time, when there are no practice arrows scheduled on the competition venue, the matches will start as soon as the field is ready. Athletes should be alert and prepared for their matches to start earlier than scheduled.

In case of a bye, athletes may be allowed to shoot on their own target, provided the competition schedule allows. If the competition schedule allows, no score will be recorded or displayed and athletes shooting their bye must respect the DOS timing and signals of the competition. Recurve athletes are permitted to shoot 3 sets of practice and compound athletes are permitted to shoot 5 ends of practice for their bye.

### 3.6 Appeal procedure

- An Appeal form is attached to this document.
- In case of an intent to appeal or an actual appeal, the times indicated on the Appeal form must be considered.
- Appeal forms should be given to the Chairman of the Tournament Judge Commission or to their deputy.
- A fee of 50 USD (or 50 EUR) must be paid to the Chairman of the Tournament Judge Commission, for the appeal to be valid.
- If the appeal is upheld by the Jury of Appeal, the fee will be returned. In the case of the appeal being rejected, the fee will not be returned.

### 3.7 Lines



A waiting line will be marked at least 3 metres behind the shooting line. A media line will be marked one metre behind the waiting line. An Equipment/Coaches line will be marked 4 metres behind the waiting line.

For Team rounds, the coaches will be allowed in front of the coach line, to be along with the team. However, only one scope per team (including the coach) will be allowed in the space between the shooting line and the coach line. If the team wishes to use a scope for the athletes, and one for the coach, then the coach must remain behind the coach line.



# Results

## 4.1 Timing control system

World Archery timing equipment will be used for timing and scoreboards on preliminary rounds and finals. During qualifications and elimination rounds, the clock will run until the end, without interruption of the Director of Shooting.

## 4.2 Results system

- Qualification Round - scoring will be completed by athletes. One athlete records, on the official paper-based score sheet, the scores of all other athletes on that target. At the same time, another athlete, on that same target, will enter all the scores of the athletes on that target into the scoring tablet.
- Scorecards MUST be signed by both the athlete and the scorer, have all the totals mathematically correct with the 10s and 11s count fully completed. Any scorecards where the 10s and 11s count are not completed a "0" will be given for the total of 10s and 11s count for that athlete. Any score cards not signed or the score total is missing will result in disqualification.
- Elimination Round – scoring will be completed by athletes. One athlete/team records the arrow values of both athletes/teams on the paper score sheet. While at the same time, the other athlete/team inputs the arrow values into the scoring tablet. Both athletes/teams should verify that all scores are written and entered correctly before returning to the shooting line.
- At the end of the match, the scorecard must be fully completed and signed by the athletes (or agent/judge in the case of finals) involved in the match.
- Scoring tablets will be used during the Qualification and Elimination Rounds, but not in the Finals. Mr. Oguzhan Ulucan is responsible for the results of the event.
- **IMPORTANT NOTE: There will be internet access in the official hotels and the venues. Because of this we will not distribute any printed results and information.**

## 4.3 Rankings

At the end of the event, the Hyundai Archery World Cup Rankings (<https://worldarchery.sport/world-cup-ranking>) will be updated.

The World Rankings (<https://worldarchery.sport/world-ranking>) are updated every Monday.

# Reminder on Rules

## 5.1 Dress regulations

20.1.1 During the Olympic Games, World Championships, World Ranking Events and World Cup Events, athletes and team officials shall dress in sports clothing on the field of play.

- All members of one team by category shall be dressed in the same team uniform. The teams of one country may wear different design and colour uniforms. Team officials may wear a different style but should wear the same colours and should be easily identified as the official of their team;
- Athletes shall wear trousers, shorts, dresses, skirts, or divided skirts of their choice; however, this legwear may not be shorter than the athlete's fingertips when the arms and fingers are extended at the athlete's side. They shall wear long or short sleeved shirts, blouses, or tops, however, the upper body clothing must be fixed over each shoulder covering the front and back of the body while still covering the midriff when the athlete is at full draw.
- No denim or jeans, regardless the colour, or camouflage clothes and equipment may be worn nor any oversize or baggy type pants or shorts;
- During the Team and Mixed Team match play competition the same colour and style shirt/blouse/top and the same colour pants/shorts/skirts shall be worn;
- Due to weather conditions, protective clothing such as sweaters, track suits, raingear, etc. may be worn following approval by the Technical Delegate of the event, or, in his absence, the Chairperson of the Tournament Judge Commission;
- Headwear is optional;
- During finals with TV coverage, undershirts, compression shirts or sleeves may be used on condition that they match the predominant colour of the team shirt or are white (might include design, names, or markings but the predominant colour should be white).

## 5.2 Rules update

The current World Archery Constitution and Rules is to be applied for this event (version 2025-01-15)

### Time to shoot an arrow:

13.4.1 The total time allowed to shoot an end shall be determined by the total number of arrows to shoot in an end, where:

13.4.1.1 For World Ranking Events:

- 20 seconds per arrow is the time allowed for individual alternate shooting, and for all team and mixed team rounds including shoot-offs;

- 30 seconds per arrow is the time allowed for individual shooting during qualifications, Olympic round and Compound rounds where alternate shooting does not apply, including shoot-offs;

## Equipment Failure:

12.2.3. No extra time shall be allowed for equipment failure or the treatment of medical problems, but the athlete concerned may leave the shooting line to resolve the issue and return to shoot any remaining arrow(s) if the time limit permits. In the Team Event other member(s) of the team may shoot in the meantime.

## 5.3 Antalya Specific Applicable rules

### Book 2 - Chapter 4

Article 4.5.1.3 - The 50m Round for Compound consists of ~~72~~ **60** arrows on the 80cm target face.

Article 4.5.1.5 - The 70m Round (for Recurve) consists of ~~72~~ **60** arrows shot at 70m on the 122cm target face.

### Book 3 - Chapter 14

Article 14.1.4.1 - In each set an athlete can score a maximum of ~~30 points~~ **33 points** (for three arrows). The athlete with the highest score of that end obtains two set points; in case of a tied score both athletes obtain one set point.

Article 14.1.5.1 - In each set a Team can score a maximum of ~~60 points~~ **66 points** and a Mixed Team a maximum of ~~40 points~~ **44 points** (with two arrows per athlete). The team with the highest score of that end obtains two set points; in case of a tied score both teams obtain one set point.

Article 14.4 - Scorecards shall be signed by the scorer and the athlete, indicating that the athlete agrees with the value of each arrow, the sum total, the number of 10's and the number of ~~X's~~ **11's** [...]. If the scorer is participating in the shooting, the scorecard shall be signed by another athlete on the same target butt.

Article 14.4.1 - Each target will have two scorecards one of which may be electronic. If there is a discrepancy in the arrow values between an electronic and a paper score card, the paper card will take precedence.

The organisers are not required to accept or record scorecards that have not been signed, do not contain the sum total, and/or the number of 10's and/or the number of ~~X's~~ **11's** [...] and/or which contain mathematical errors.

The organisers or officials are not required to verify the accuracy of any submitted scorecard, however if the organisers or the officials note an error or a missing signature at the time of submission, they will ask the athletes concerned to correct such error and the result as corrected will stand. Organizers may, but are not required to, have a process when the scorecards are submitted by the athletes to attempt to note an error or a missing signature. However, athletes are ultimately responsible for their portion of the scorecards and, if a paper scorecard is not submitted or is submitted without the athlete signature and not corrected at the time of submission, the athlete shall be disqualified (individual/team and mixed team where applicable) by the chair of the tournament judge commission. Any such corrections shall occur before the next stage of competition.

Should a discrepancy be found in the sum total where:

- two paper scorecards are used, the sum total of the lower arrow scores will be used for the final result; if the score on a single scorecard (and in the case of double scoring, the score is the same on each scorecard), is lower than the actual score, the lower score on the scorecard will be used;
- one paper scorecard and one electronic scorecard are used, the total of the electronic scorecard will be used for total score, 10s and of ~~X's~~ **11's** on the following conditions:
  - a total score has been entered on the manual scorecard so verification is possible;
  - in case no 10s and of ~~X's~~ **11's** [...] are entered on the manual scorecard, no 10s and of ~~X's~~ **11's** [...] are registered;
  - in case no total score is entered on the manual scorecard when it is submitted to the results team, then the athlete shall be disqualified (individual/team and mixed team where applicable).

Article 14.5.1 - Except for those ties as set out in Article 14.5.2. , tied scores in all rounds are ranked using:

- Individuals and Teams:

Outdoors:

- Greatest number of ~~X's~~ **11's** (inner 10's);
- Greatest number of 10's (including inner 10's);

[...]

- After this, athletes still tied shall be declared equal; but for the position in the match play chart a disk toss shall decide the position of those declared equal.

### Book 3 - Chapter 16

Article 16.1.2 - At other World Archery events practice shall be for a maximum of **45 60** minutes but may be less and the competition shall start as soon as possible.

### **FAQ:**

#### **Can I break a world record during the event in Antalya?**

As the event is used for testing purposes only, there will be no World Record available during the event in Antalya.

#### **What is the data collection done on Tuesday?**

World Archery, in cooperation with its committees is exploring a new way of controlling bows, getting away from the classic spring or electronic bow scales. For this purpose, we would like to collect as many data as possible on athletes' information such as: bow poundage, arrow speed, arrow weight, arrow length. The submitted data will be logged anonymously.

#### **Is there a break in qualification?**

There will be a break between the 1-hour practice and the qualifications, but the 10 ends of qualifications will be shot without breaks.

#### **Is there Warmup arrows before qualification?**

The warmup will be the official practice. Athletes will be able to shoot on their target, for one hour, with the timing of the official competition and without limitations of arrows per end.

#### **How do I fill in my scorecard?**

With the eleven, you will need to fill the scorecard using the full arrow value: 11, 10, 9, 8, 7, 6, 5, 4, 3, 2, 1, M  
You will need to fill in the end total and the running score total.  
11s and 10s will need to be recorded separately on the last two boxes of the end-line.

#### **How do I score on the electronic device?**

On the electronic devices, you will need to fill the information using the full arrow value: 11, 10, 9, 8, 7, 6, 5, 4, 3, 2, 1, M

#### **What would be the tie breaking rule if 10 and X are not recorded?**

In case of a tie, except for the cut where a shoot off will be organized, the first breaking rule will be the count of 11s and then the count of 10s. If the tie remains, an electronic coin toss will decide the final ranking.

#### **Do I still get a World Ranking at the event?**

World ranking is allocated on the final ranking position of the athlete, as the change of rule will still allow athletes to be ranked as they would be after eliminations on other World Cup stages, yes, the event will allocate World Ranking points.

#### **Do I still get World Cup ranking points?**

World Cup points are allocated on the final ranking position of the athlete, as the change of rule will still allow athletes to be ranked as they would be after eliminations on other World Cup stages, yes, the event will allocate World Cup points, and bonus points on qualification round.

### **If I am shooting Saturday, will there be transportation between elimination venue and hotels?**

The organizing committee will organise transportation from/to both operating venues on Saturday morning when necessary. Hotels like the Nashira do not require any specific transportation to the eliminations venue.

### **Do I still need to get an upgrade if my athletes are engaged in both venue on elimination and finals venue?**

In the very specific case of teams having up to two officials registered in the event, but competitors being in action at both venues, the upgrade will still be necessary. However, the necessary number of upgrades will be provided for free (up to two), to make sure that there is at least one team official on each venue.

### **What happens if I need to use the toilet?**

During qualifications, the coach has the possibility to replace the athlete to collect arrows. Athletes would have the possibility to use the bathroom at this moment. If a line is noted outside of the toilets a reasonable amount of time will be allocated to make sure that all athletes are back on the Field of Play before carrying on.

### **What is the maximum points per end/match?**

Round	Recurve	Compound
Individual 6-arrow end	66	66
Individual set / 3-arrow end	33	33
Mixed team set / 4-arrow end	44	44
Team set / 6-arrow end	66	66
Mixed team match		176
Team match		264
Individual 15-arrow match		165
Qualification round	660	660

### **Event Schedule**

#### **Tuesday:**

Unofficial practice available on competition venue. Equipment inspection and data collection will be possible during the day.

#### **Wednesday:**

09:00 - 10:00 - Practice - Compound  
 10:00 - 10:15 - Break  
 10:15 - 12:00 - Qualification round 10 ends of 6 arrows - Compound  
 Shoot offs if necessary

14:00 - 15:00 - Practice - Recurve  
 15:00 - 15:15 - Break  
 15:15 - 17:00 - Qualification round 10 ends of 6 arrows - Recurve  
 Shoot offs if necessary

#### **Thursday**

AM- Recurve Team  
 PM - Compound Team

#### **Friday**

AM - Compound individual  
 PM - Compound and Recurve mixed

## Saturday

09:00 - 11:30 - Recurve Individual Elimination (qualification venue)  
10:00 - 12:00 - Team and Mixed team compound finals (finals venue)

The rest of finals schedule will remain unchanged.

## 5.4 Accreditation cards rules

### Rule Book 2 – 3.8 Accreditation

3.8.1.1. Proof of accreditation shall be carried at all times on the competition area and shall be shown on request of appropriate officials.

3.8.1.2. Only holders of appropriate accreditation shall be allowed onto the relevant parts of the competition area.

#### Accreditation card:

Athletes and team officials, registered in WAREOS, will be issued a World Archery accreditation and lanyard. Please ensure all details are correctly entered in WAREOS.

Only one accreditation will be issued, with a lanyard, for all the 2025 season. Athletes and team officials should bring their accreditation to all World Archery events such as, all World Championships, Hyundai Archery World Cup stages and the Hyundai Archery World Cup Final.

Accreditation will consist of, a photograph, full name, role, category/bow discipline, country of representation, individual World Archery ID code and access privileges.

All accreditations will need to be validated and activated on site at each of the separate World Archery events.

There is a QR code on all accreditations that will be scanned to enter and exit the competition areas. Only athletes scheduled to compete at certain stages of the event are permitted on the Field of Play, together with one coach/official.

#### Photographs

Will be taken on venue the day prior to official practice. For athlete who do not already have one.

For a valid photograph, persons are to smile and wear their official Member Association team uniform. No hats or sunglasses can be worn.

Photos are used for both event accreditation and website biographies.

Athletes and team official profile photographs expire after 24 months. Athletes and team officials whose photographs have expired will be contacted to schedule a time during the week to retake the picture, to avoid affluence and gathering at accreditation booth.

Any athlete or official that desires to update their photograph in the system can go to the accreditation area to do so during the competition week.

#### Lost/Damage/Replacement costs:

For those persons that unfortunately forget to bring, damage, or lose their accreditation, can purchase another accreditation from World Archery accreditation area at the event for the cost of 50 CHF (EUR/USD or local currency will be accepted, at a rate to be displayed on site).

#### Upgrade card.

Upgrade cards are available for those teams that do not have a coach or team manager available on their team and wish to have a coach for their athlete/team's match.

An upgrade card can be allocated to another athlete or accredited person to perform the role of coach for a specific athlete at that event.

Upgrade cards (serial numbered) are individually allocated/valid to an individual person for a particular event athlete/team. As soon as the athlete/team is out of the competition, the upgrade card is no longer active.

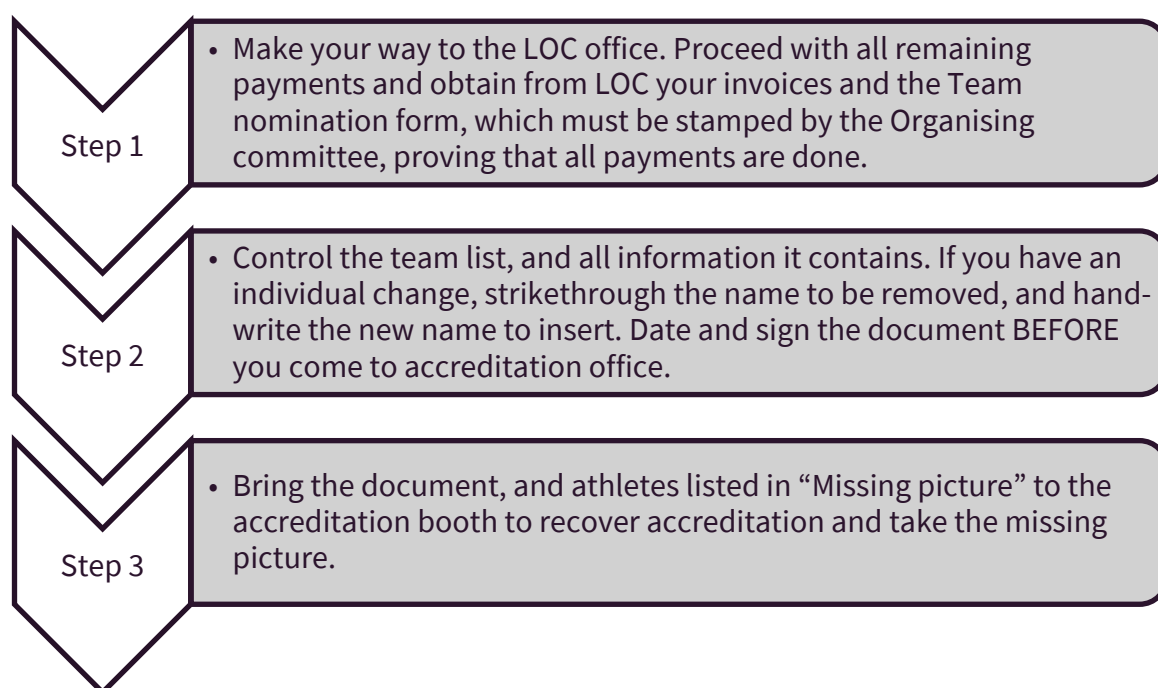
For an upgrade card to be issued, an Accreditation Upgrade Form needs to be completed and signed by the Team Manager, President, or Secretary General of the Member Association of the athlete/team to be coached. This form can be completed in advance by completing the form in annex or at venue.

Each upgrade cards costs 50 CHF (EUR/USD or local currency will be accepted, at a rate to be displayed on site).

Upgrade cards will not be available for teams who already reach the maximum number of officials allowed according to World Archery rule (Book 2, Chapter 3, Article 3.7.3.3.) or to individuals registered as guests. Remember, as stated in the World Archery rules, only 1 accredited team official per athlete is allowed with a maximum of 4 officials if a team has more than 4 athletes competing on the field of play.

### Accreditation process

Before arriving at the event, make sure with your Member Association that all payments are done, and that you carry all necessary payment proofs if they are not already registered in your summary of costs on WAREOS.



Note: Athlete in the "picture to retake" section, will need to come later during the week when all accreditation process is over, priority is given to missing pictures.

**Accreditation will open on Tuesday 5 May at 09:00, at the venue.**



# Logistics

## 6.1 Transportation

Daily transportation information and schedules will be published on event page and placed at the competition field and notice boards at all the official event hotels.

## 6.2 Meals during the event

Breakfast, Lunch and Dinner will be served at the official hotels.

- Breakfast in all hotels: 07:00 – 10:00 hrs.
- Lunch in all hotels: 12:00 – 14:00 hrs.
- Dinners in all hotels 19:00 - 21:00 hrs

*\*Times will adjust to the competition schedule as and when required.*

## 6.3 Internet Access and additional hotel charges

Internet access will be free of charge in the rooms and lobby of official hotels, there will also be free internet access on venue.

All other hotel expenses including laundry and minibar, etc will be covered by the participants themselves.

## 6.4 Medical related issues

First Aid services and a doctor will be available from 02 to 08 June at the archery venues.

In cases of emergencies in official hotels, please inform hotel contact person or volunteers in each official hotel.

The closest hospital for emergencies is:

Antalya Egitim Arastirma Hastanesi

Varlik, Kazım Karabekir Cad, 07100

Murapasa / Antalya, TURKIYE

## 6.5 Data collection

As of this year, we will initiate a data collection on athlete's archery equipment, during official practice athletes willing to participate need to announce themselves to judges when they arrive at control area. We will collect arrow weight, bow poundage and arrow speed. This data collection is open to both recurve and compound.

We aim to evaluate the possibility of changing the bow poundage limitation to energy limitation. At the moment, we've had 59 athletes participating in the data collection. Below, some insights on the average data collected so far. These insights are not to be considered as an outcome of the study, which will require more analysis than the simple average presented here.

Bow type	Gender	Bow Poundage (lbs)	Arrow weight (gn)	Arrow speed (kph)	Kinetic Energy (J)
Compound	Men	57,07391304	394,7826087	301,026087	89,6135
	Women	53,88	334,9090909	284,7454545	68,1962
Compound Average		56,10606061	375,4117647	295,7588235	82,6844
Recurve	Men	48,47857143	378,9285714	218,9357143	45,5303
	Women	42,22222222	311,0888889	210,7333333	34,5806
Recurve Average		46,03043478	352,3826087	215,726087	41,2457
Global Average		51,96785714	366,1192982	263,4649123	65,9635

# Protocol, ceremonies, clean sport.

## 7.1 Medal ceremonies

All athletes involved in the ceremonies are requested to go to the gathering point by the athletes' entrance to the main Field of Play, equipment can be stored in the staging area until the end of the corresponding victory ceremony.

Bronze medal winners are requested to be present at the final venue gathering point of the Award Ceremony, 20 minutes before the ceremonies are due to start.

Medal ceremonies will be conducted immediately after the interview of gold medal winner of each category during the days of the finals (please check the competition schedule).

Athletes are requested to proceed straight to the mixed zone or the ceremony area.

## 7.2 Mixed zone and press conferences:

Interviews will take place at the Mixed Zone and athletes will be requested to pass through the mixed zone to speak with the media.

## 7.3 Clean sport

### Anti-doping

Anti-Doping control will follow World Archery rules (Hyundai Archery World Cup and World Ranking events).

Athletes should bring their passports and/or accreditation cards to the anti-doping control station if selected for a test.

### Alcohol test

Athletes and officials should also be available for random alcohol testing during the competition, following World Archery rules.

Alcohol testing can be performed at any moment on anyone that is present on accredited areas of the field of play.

### 2.3.4 Alcohol Test

*Alcohol is a banned substance in archery. No person on the field of play shall consume alcohol or be under the influence of alcohol as prohibited in 2.3.4. Alcohol Test. Athletes selected for Anti-Doping Sample collection shall also be tested for alcohol. Tests may be carried out at any time during the Competition at any International Event at the discretion of the person designated by World Archery to conduct the Alcohol Test, or by the Organising Committee if World Archery has not designated any such person.*

#### 2.3.4.1 Procedure for alcohol tests

*The alcohol test is performed by the testing of exhaled air. If the test of exhaled air exceeds the doping violation threshold of 0.1 per mille, a second test of exhaled air will be performed 10 minutes later using a different breathalyser. If the second test of exhaled air still exceeds the threshold, this will result in a positive alcohol test.*

## 15.5 Consequences of a Positive Alcohol Test

15.5.1 If an alcohol test performed on a person subject to [2.3.4. Alcohol Test in Book 1](#) results in positive before the end of an Event, such person shall be withdrawn from the Event and the case will be forwarded to the Board of Justice and Ethics for further sanctions.

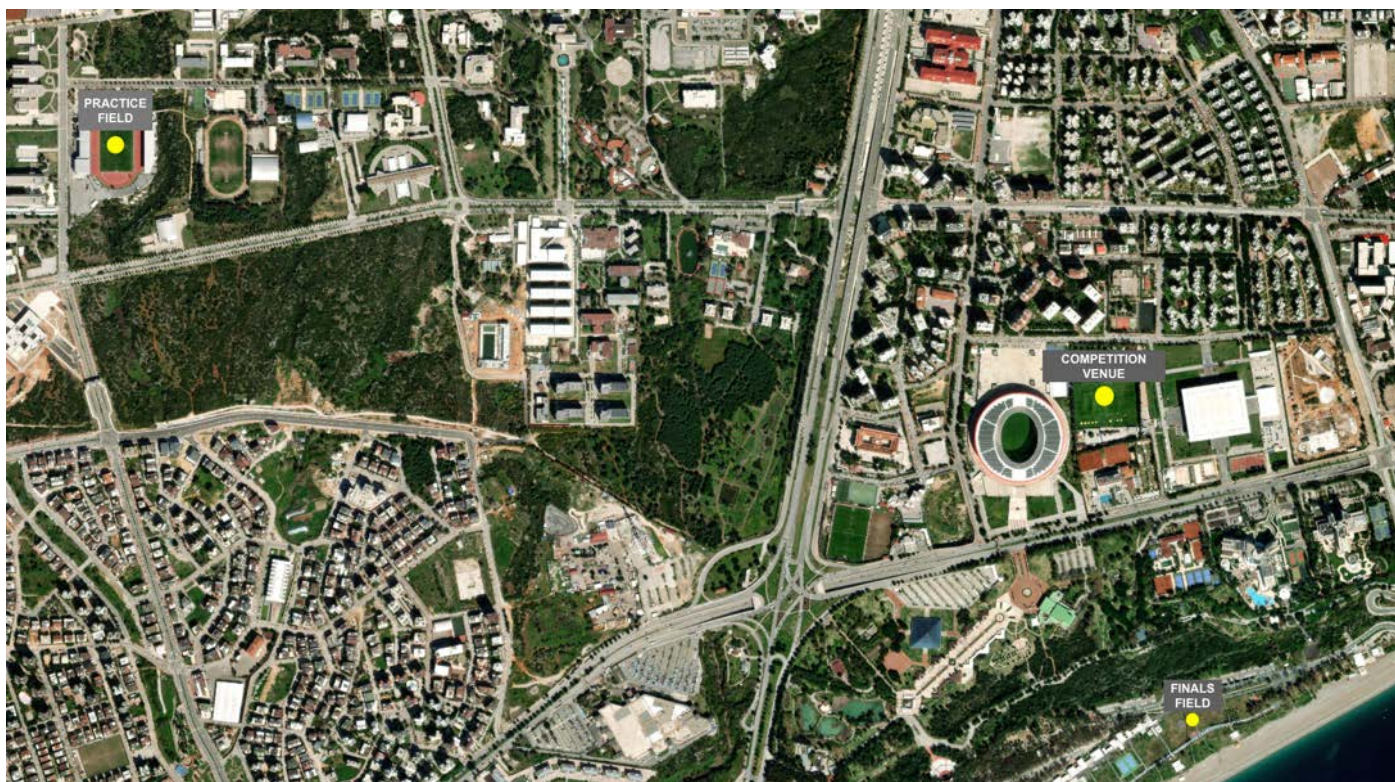
### 15.5.2 Consequences are:

- Disqualification of the Event;
- 1 year of ineligibility for the first offense;
- 4 years of ineligibility for the second offense;
- Life ban for the third offense.



# Archery venues

## Event venues



## Qualifications and eliminations

Antalya Centennial Archery Centre

Meltem Mah, Sabanci Blv. No 8 Muratpasa / Antalya, TURKIYE





## Finals Field

Antalya Beachpark Green Zone  
Beachpar, Konyaalti / Antalya, TURKIYE



# Team nomination form

Country: .....

## Recurve Women:

1. ....

2. ....

3. ....

athlete NOT in the team: .....

## Recurve Men:

1. ....

2. ....

3. ....

athlete NOT in the team: .....

## Compound Women:

1. ....

2. ....

3. ....

athlete NOT in the team: .....

## Compound Men:

1. ....

2. ....

3. ....

athlete NOT in the team: .....

Name and signature of Team Manager:

.....

The results of the 3 highest scoring members of the team, per discipline and gender will automatically be used for the team events. If Team Managers wish to use other athletes of the team, please use this form to name the athletes that will be competing in the team event.

Forms to be given to the World Archery results verifier or Chairman of the Judges Commission at least 15 minutes before the start of the team competition.



# Mixed team nomination form

Country: \_\_\_\_\_

## Recurve Mixed team:

1. ....

2. ....

## Compound Mixed team:

1.....

2. ....

Name and signature of Team Manager:

.....

The results of the highest scoring male and female members of the team will automatically be used for the mixed team event. If Team Managers wish to use other athletes of the team, please use this form to name the athletes that will be competing in the mixed team event.

Forms to be given to the World Archery results verifier or Chairman of the Judges Commission at least 15 minutes before the start of the mixed team competition.

# Appeal Form

☐ This is an intention of Appeal

☐ This is an appeal form

(please tick appropriate box)

## Appeal Fee

- 50 USD
- 50 CHF
- 50 EUR

- Team Manager of the following country: \_\_\_\_\_
- Name of the Team Manager: \_\_\_\_\_
- Team (please name country): \_\_\_\_\_
- Individual person (name): \_\_\_\_\_
- Other (please specify): \_\_\_\_\_

This appeal is against: \_\_\_\_\_

Description of Appeal or Protest:

I believe this action is against the following rules (state article if known):

\_\_\_\_\_

Signature: \_\_\_\_\_ Name in printing: \_\_\_\_\_

### Article 3.13.3.1:

*An intention to appeal when it might affect the progression of an athlete from one stage of the competition to the next, shall be expressed in writing and lodged with the chairperson of the Tournament Judge Commission within five minutes of the end of the relevant round or match, whichever applies. During the Finals of match play rounds, the notice of intent to file an appeal shall be given within five minutes of the end of the match, or prior to the start of the next match, whichever is first.*

### Article 3.13.8:

*Jury decisions shall be minuted and reported to the appellant, the chairperson of the Tournament Judge Commission and the organisers before the beginning of the next stage of the competition or before the awarding of prizes.*

### Article 3.13.4:

*Amount paid is reviewed and determined by the World Archery Executive Board on an annual basis.*

Received on: \_\_\_\_/\_\_\_\_/\_\_\_\_ Time: \_\_\_\_\_

by Chairperson of the Tournament Judge Commission

Signature: \_\_\_\_\_ Name in printing: \_\_\_\_\_